

Programming Guide for the InTouch ELD Platform

Installation of IOSiX Device for use with InTouch ELD

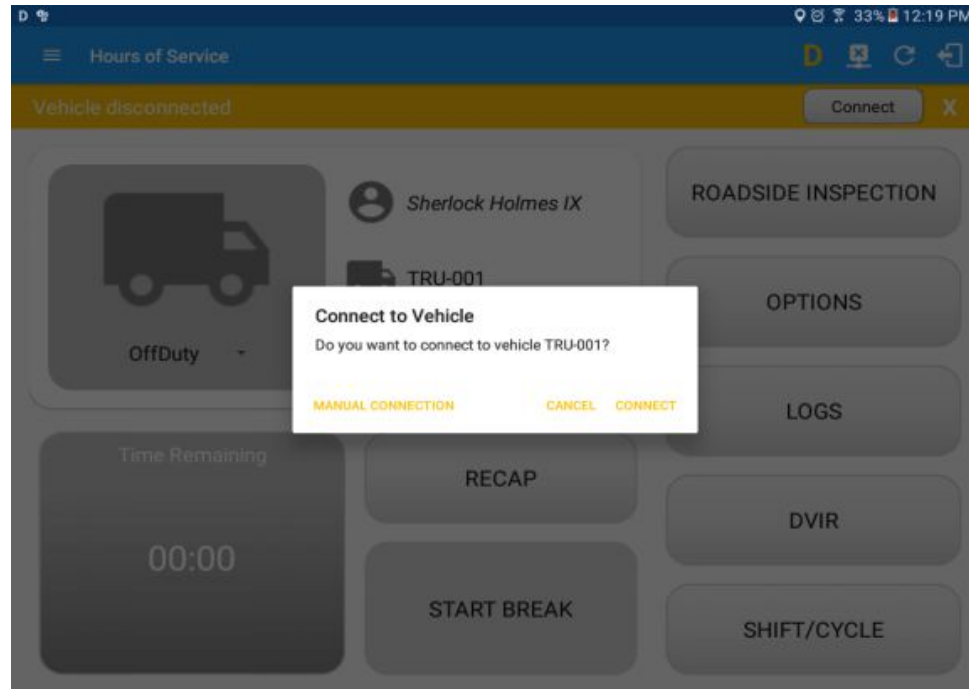


- Open InTouch ELD
- Login to the app using a driver user account
- On the main dashboard, tap the 'Connect' button which is located below the app header to display the 'Connect to Vehicle' dialog.
- At this point, 2 options were present in order to establish a connection to the VBUS device: Manual Connection and Auto Connection.

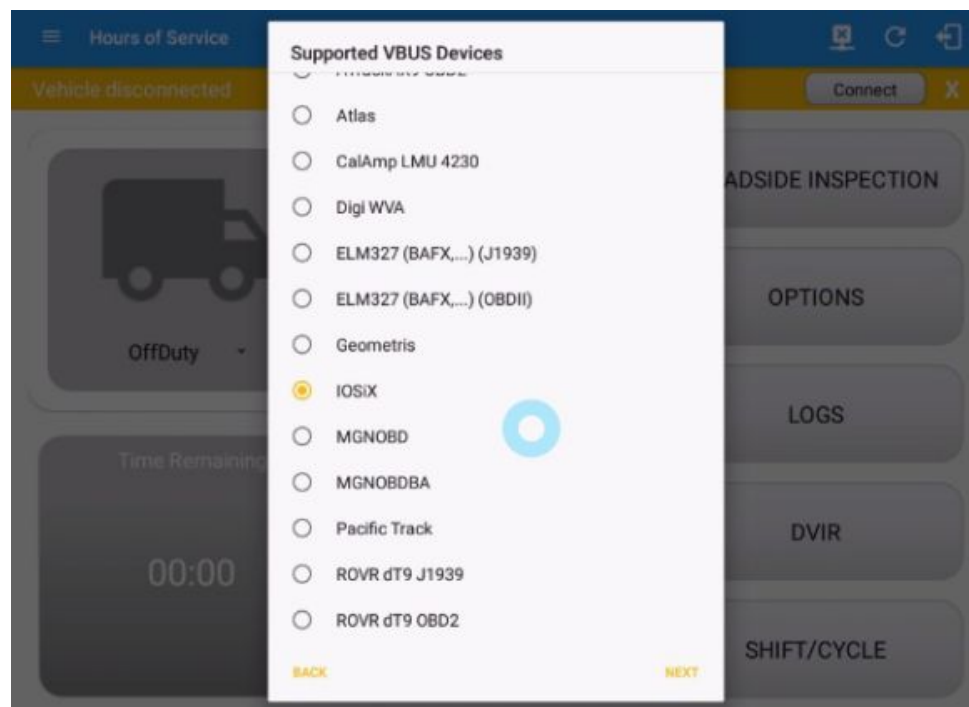
A. Manual Connection

Programming Guide for the InTouch ELD Platform

- Tap on the **'Manual Connection'** button



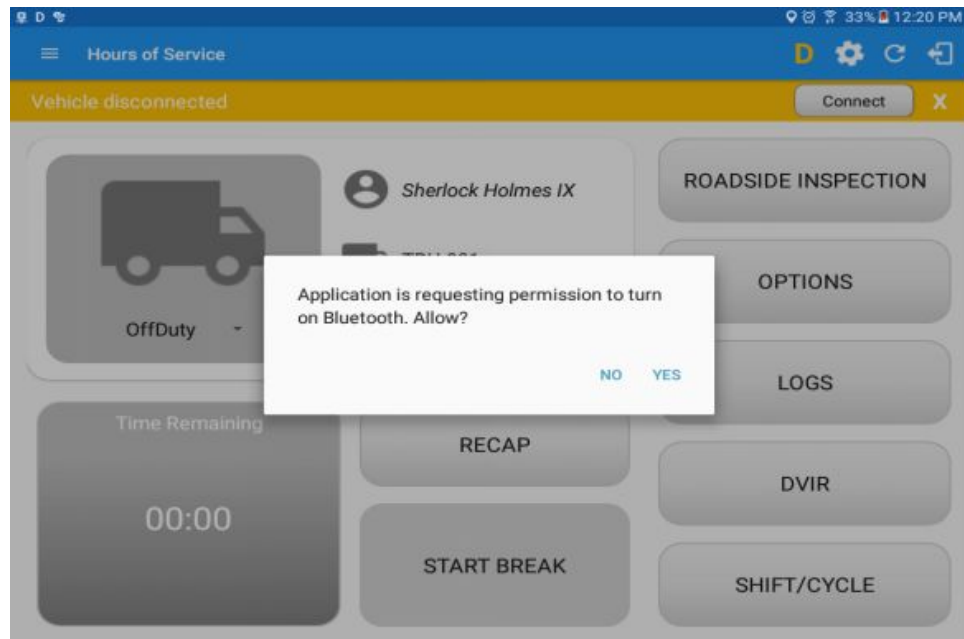
- Select VBUS Device - IOSix



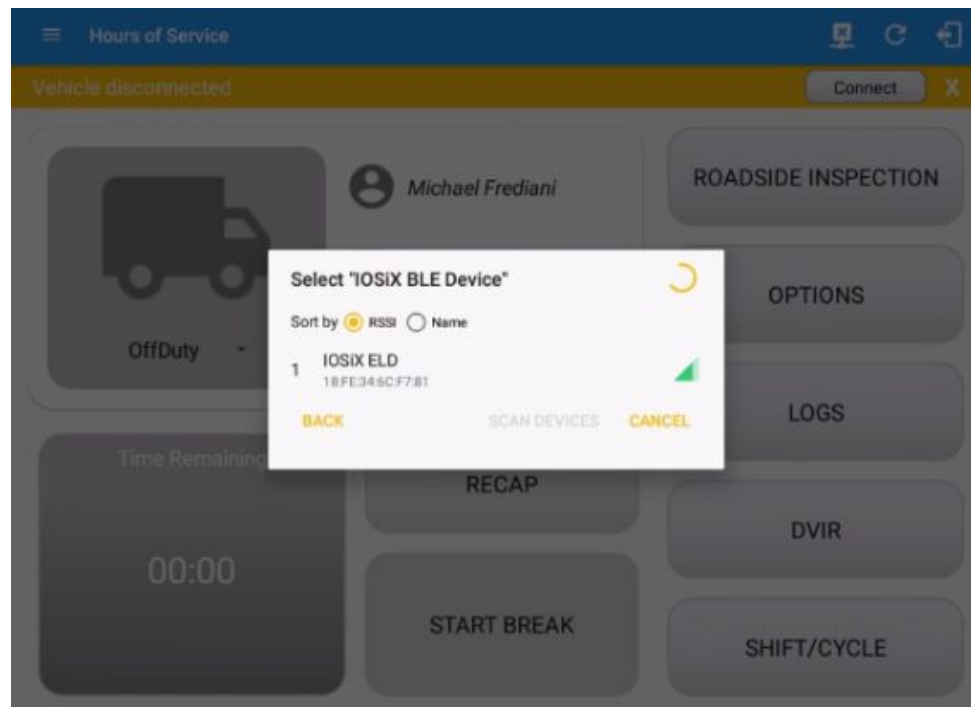
- Tap on the Next button

Programming Guide for the InTouch ELD Platform

- If the Bluetooth of the device is disabled, the **'Bluetooth Permission Request'** dialog will be displayed.
- Tap on the Yes button to enable the Bluetooth of the device

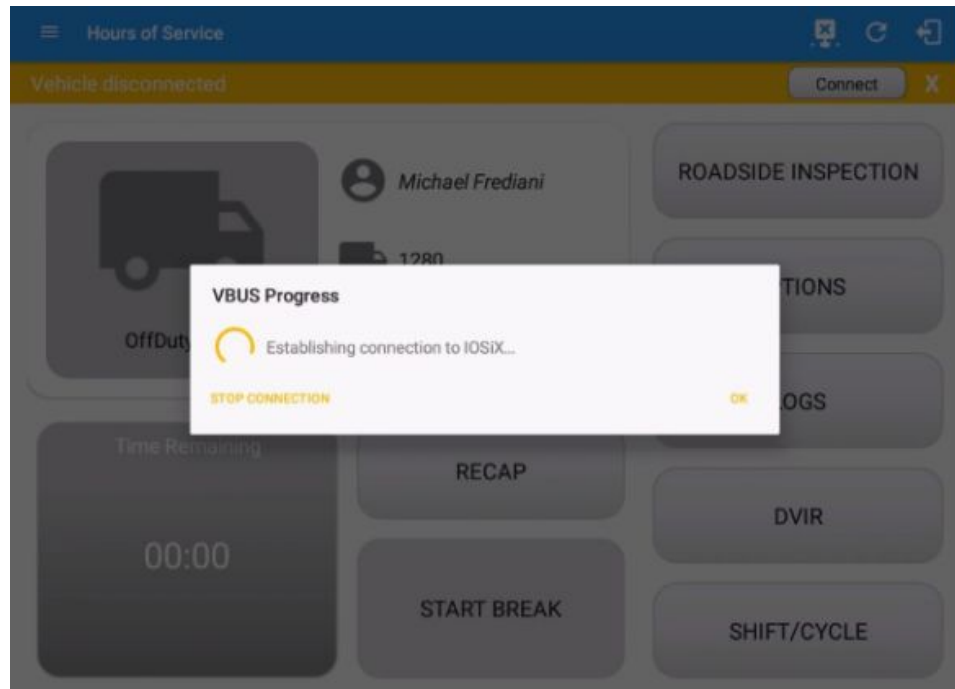


- Choose the correct Bluetooth device from the list



Programming Guide for the InTouch ELD Platform

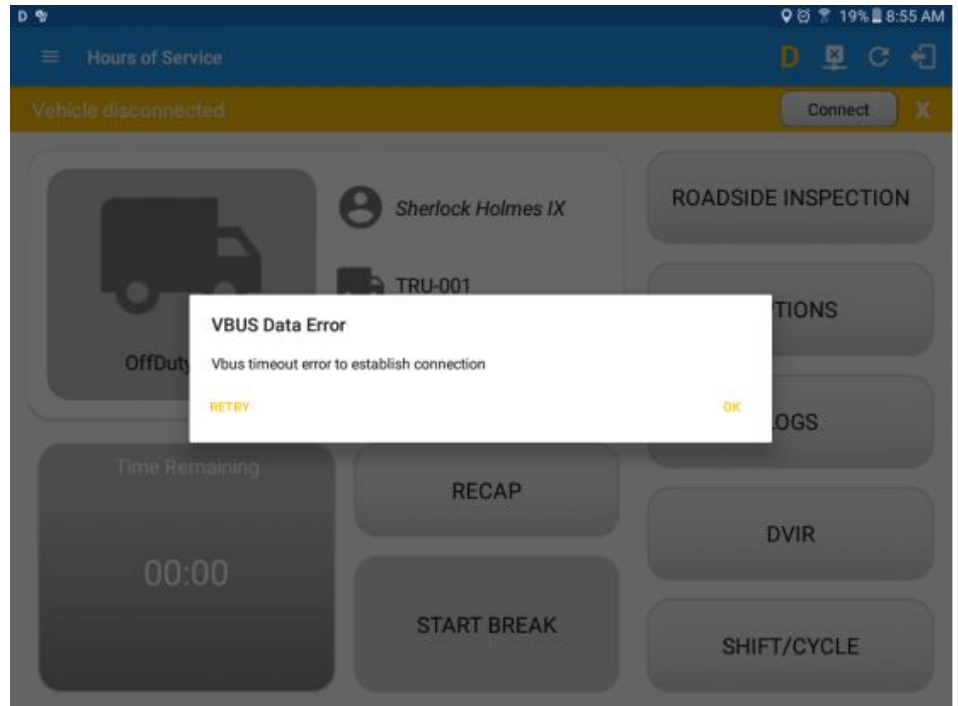
- It will then display the VBUS Progress dialog upon establishing a connection to the selected VBUS device along with a 'Stop Connection' and 'Ok' buttons:
 - A. Tap 'Stop Connection' button to stop establishing VBUS connection.
 - B. Tap OK button to hide the VBUS Progress dialog while establishing VBUS connection.



- If the VBUS connection results to an error (given the following situations below), an error dialog will display.
 - VBUS Data Error
 - i. Interrupted Internet Connection

Programming Guide for the InTouch ELD Platform

ii. VBUS Power Failure



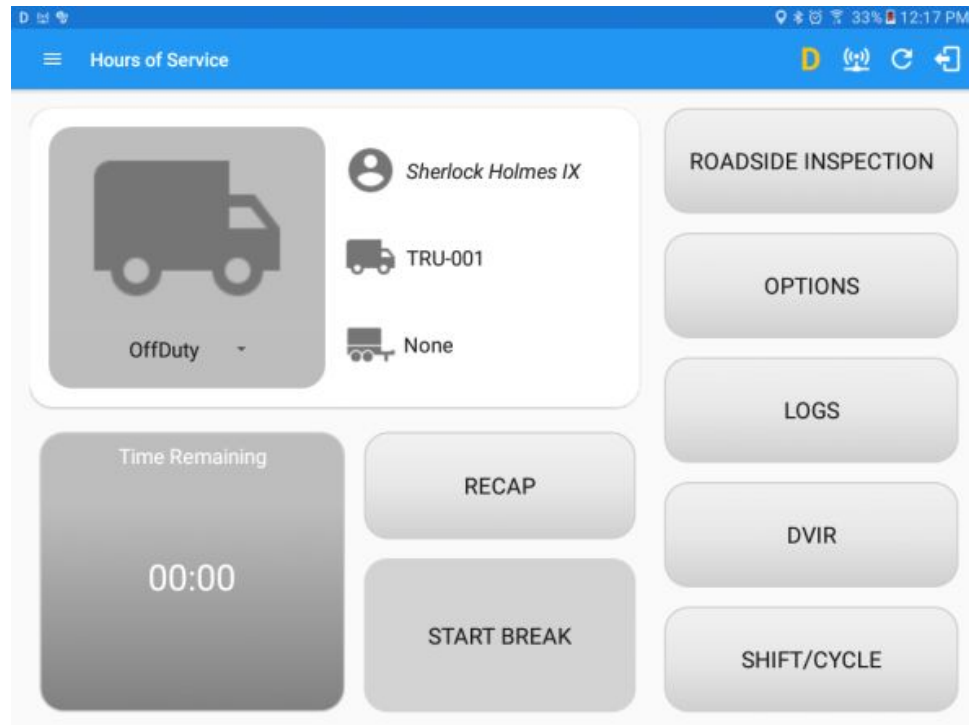
Note: The app will automatically disconnect from the device after attempting to connect for 1 minute and 30 seconds without receiving any data from the VBUS device.

- Upon establishing a connection to the VBUS device you should hear a tone letting you know that device is now connected.
- To check if you are connected, navigate to the Main Dashboard and the VBUS

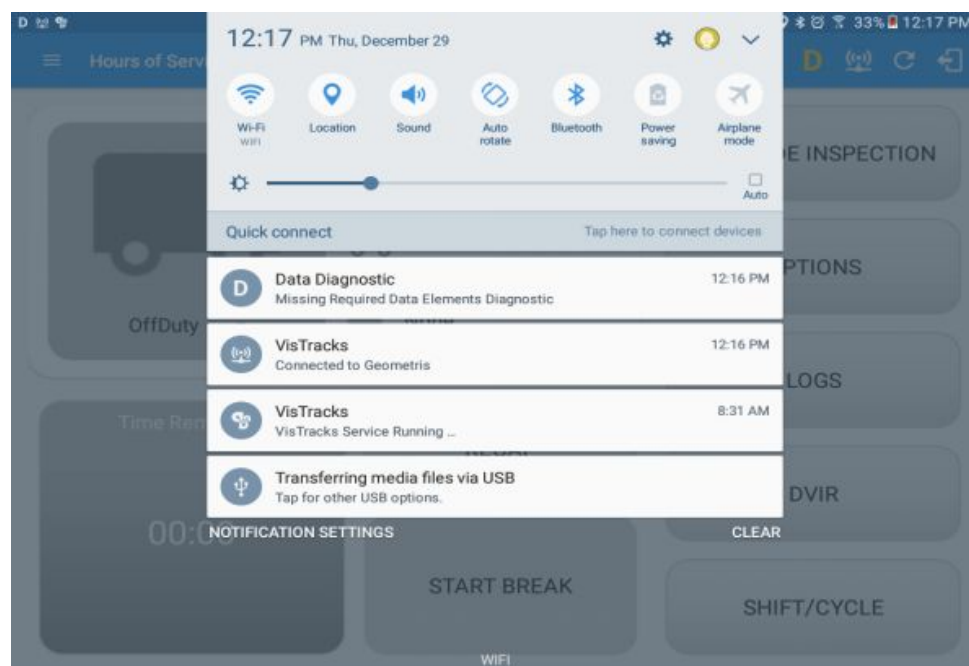
status indicator should be displayed as “Connected”  which is located on

Programming Guide for the InTouch ELD Platform

the app header.



- You can also check on the Android Notification Bar and you should see the VBUS Service status as “Connected”.



Programming Guide for the InTouch ELD Platform

- The device and the application are now connected.

B. Auto Connection

- Tap on the Connect button
- The VBUS Progress dialog will then display
- Upon establishing a connection to the VBUS device, You should hear a tone letting you know that device is now connected.
 - Prerequisites to successfully perform Auto Connection
 - Create a Pre-configured device in the Portal's Equipment Management Page or in the App's Manage Vehicles/Trailers screen
 - Set the ELD Configurations
Note: Only users allowed to Manage Equipment can create equipment in the app.