

The logo for A1 ELD, featuring the text '!A1 ELD' in a bold, white, sans-serif font. The exclamation point is a solid circle, and the '1' is a vertical bar. The 'E' and 'L' are stylized with horizontal bars. The background is a blue-tinted image of a truck fleet.

!A1 ELD

Powered by HOS247

Best ELD System

A1 ELD solution ensures FMCSA compliance and delivers superior safety and productivity for any fleet. !A1 ELD logbook app and electronic logging devices are perfect choice for small to large fleets and owner-operators.

Main Features

ELD Compliance and much more

Automatic HOS

Automatic hours of service calculation and violation alerts.

Automatic recording of driving time, miles and locations.



Compliance Monitoring

Monitor your drivers' hours of service logs and DVIRs.

Receive alerts to prevent violations.

DOT Inspection Mode

Simply show logs on your phone or tablet.

No printer needed.



Fleet Tracking

Track your vehicles in real time and view their location history.

Multiple HOS Rules

Compliant with multiple HOS rules including

Property/Passenger 60-hour/7-day & 70-hour/8-day.



IFTA reporting

Automatic IFTA state mileage reporting saves you time and money.

Electronic DVIR

Vehicle inspection reports are created and submitted in seconds.



Access Permissions

Manage permissions for fleet managers, compliance officers, drivers, accountants, brokers and customers

ELD Components

Things You Need To Stay Compliant

Logging Device



Affordable and easy to install logging device. Simply plug ELD into a vehicle ECM port and start recording driving hours and miles automatically.

Logbook App



Easy to use app for managing hours of service logs. It connects to ELD via bluetooth and displays recorded driving time to a driver.

Tablet/Smartphone



!A1 ELD & App work great with most Android 3G/4G tablets and smartphones. Use your own or purchase devices and data plans from us.

Install & Connect ELD

!A1 ELDs are installed within minutes



✓ Locate ECM (diagnostic) port

Locate ECM (diagnostic) port inside of your vehicle. Look for 9-pin or 6-pin circular ports in heavy duty vehicles. Look for OBDII port in light/medium duty vehicles.

✓ Install ELD

Simply plug the provided cable into a vehicle ECM (diagnostic) and attach the other end to the ELD device. The dual fastener is provided for dash mounting.

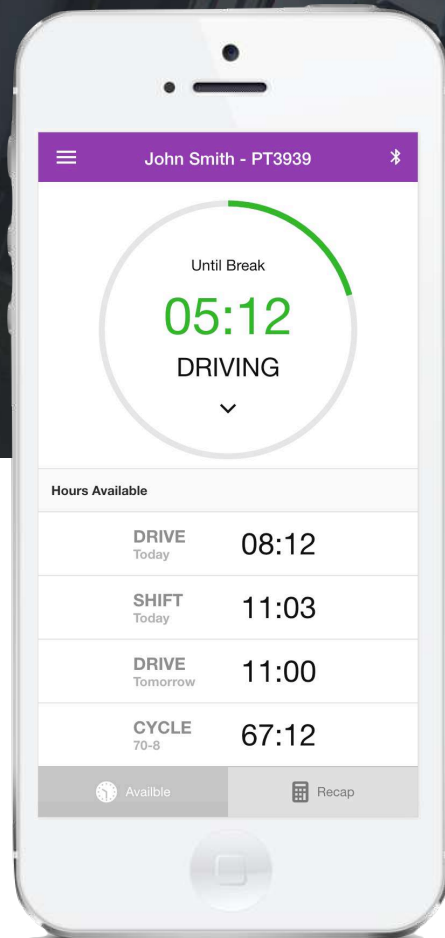
✓ Log into !A1 ELD Logbook App

Log into !A1 Logbook App on your tablet/smartphone with a username and password created during a sign up process or provided by a fleet manager.

✓ Connect ELD

Select a vehicle from a list of available vehicles and your device will attempt to connect to ELD via Bluetooth. Green Bluetooth indicator at the top right corner means you are ready to start using ELD.

Driving with ELD



- ✓ Once ELD connected, your driving time will be captured automatically.
- ✓ Once your vehicle is moving at 5mph or more, your duty status is switched to Driving.
- ✗ Your logs and others features are not available while in Driving mode due to safety reasons.
- ✓ Once your vehicle is stopped, you may change your duty status by tapping on the status circle. The app will remind you to make a selection in 5 minutes. If no selection is made, your duty status will be switched to On Duty.



Hours

Available driving hours, required breaks, on-duty limits and required off-duty time are calculated automatically

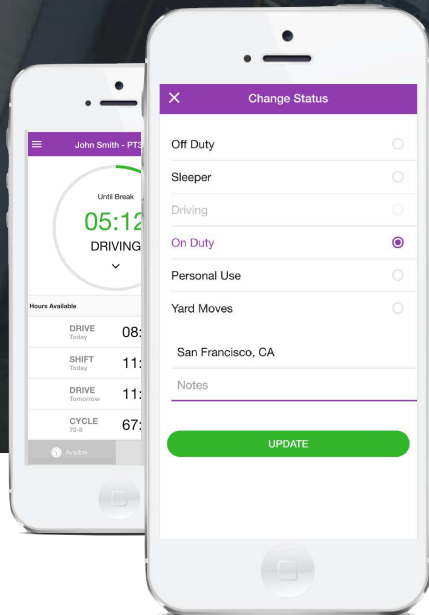


Warnings

Visual notifications and sound warnings help you to avoid hours of service violations and stay compliant

Duty Status

Set duty status with just two-clicks. Status is updated automatically when driving starts or stops. Easy-to-use interface allows drivers to spend less time doing paperwork and more time driving. !A1 ELD simplifies training and prevents log errors.



“Managing Hours of Service is much easier with !A1 ELD”



Current Status

Current duty status is always displayed on Status page inside of status circle along with available or reset hours.



Change Status

Tap the status circle, select your current status, add a note if necessary (i.e. pre-trip inspection) and press “Update” button.



Personal/Yard

Personal Use Off-duty and Yard Move On-Duty statuses must be configured and allowed by a fleet manager.

Logs

Managing logs has never been easier



Today's Log

Tap on TODAY's log to view & manage your current log.



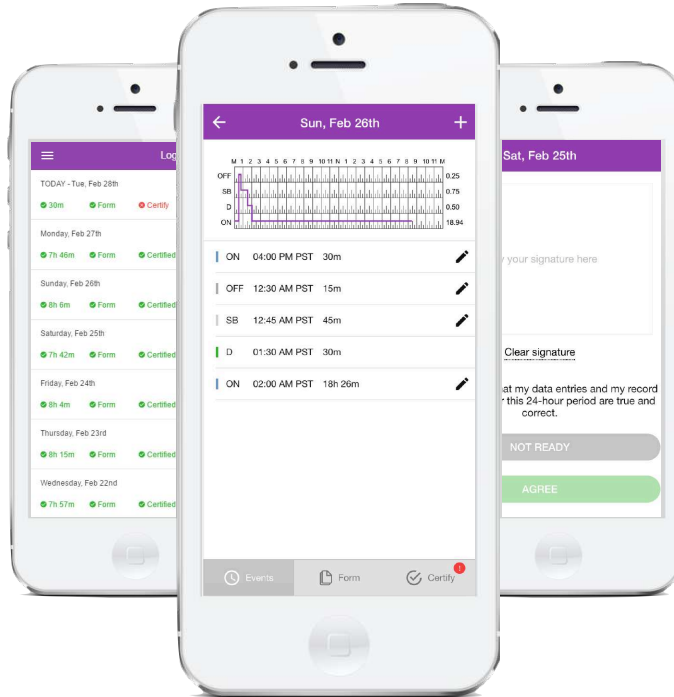
Logs History

View past logs & violations if any. Tap on a log you would like to view or edit.



Graph Grid

Similar to paper logs, view your hours or service on the graph grid.



Statuses/Events

Tap on a specific status in the events section to view location and notes.



Edit/Insert Status

Press on "Pencil" to edit or "+" to insert a past duty status.



Certify Log

Tap "Certify" and sign your log when your shift ends.

DVIRs

Paper-free DVIRs save time for drivers



Add DVIR

Tap "+" to add pre-trip or post-trip inspection report



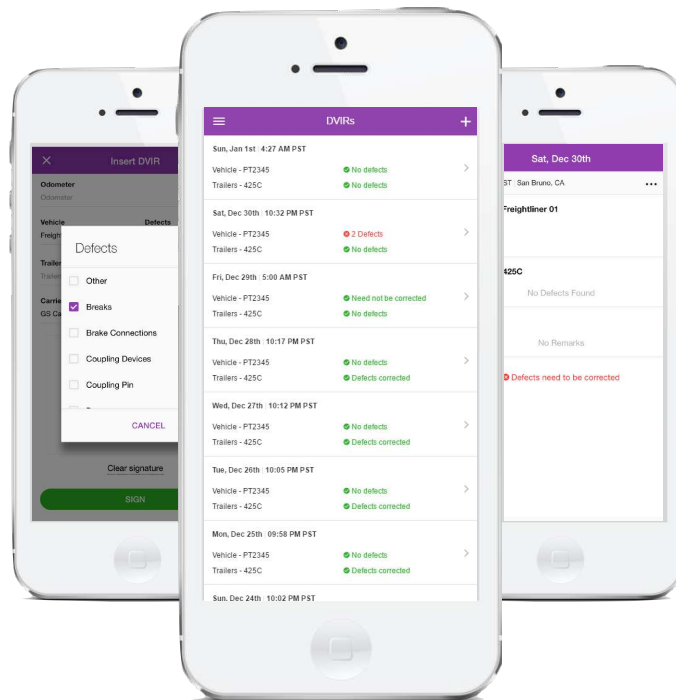
Defects

Select defects (if any) from the list and sign DVIR



Correct Defects

Notify mechanic if defects need to be corrected



Review last DVIR

Tap on DVIR to review and to confirm the issues have been resolved



DVIRs History

Review past DVIRs to prevent compliance errors

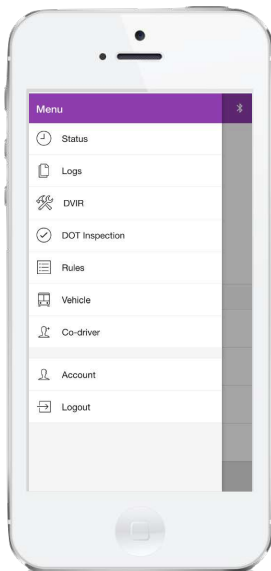


Edit DVIR

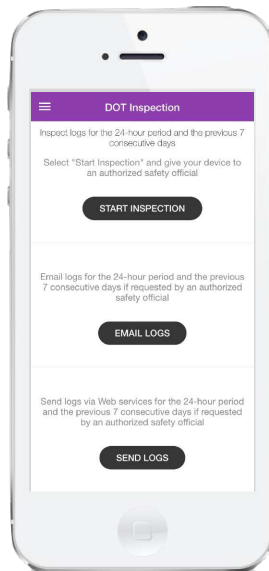
Tap "..." button to edit DVIR and to fix any errors

Easy to Use & to Navigate

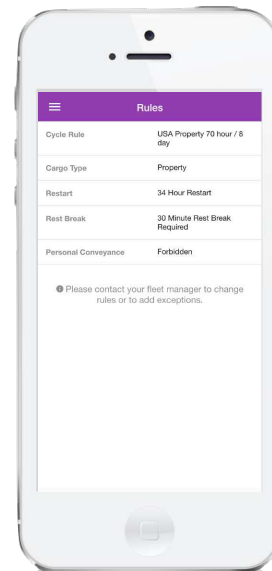
The most driver-friendly ELD interface on the market



Easy-to-Navigate
& Simple Menu



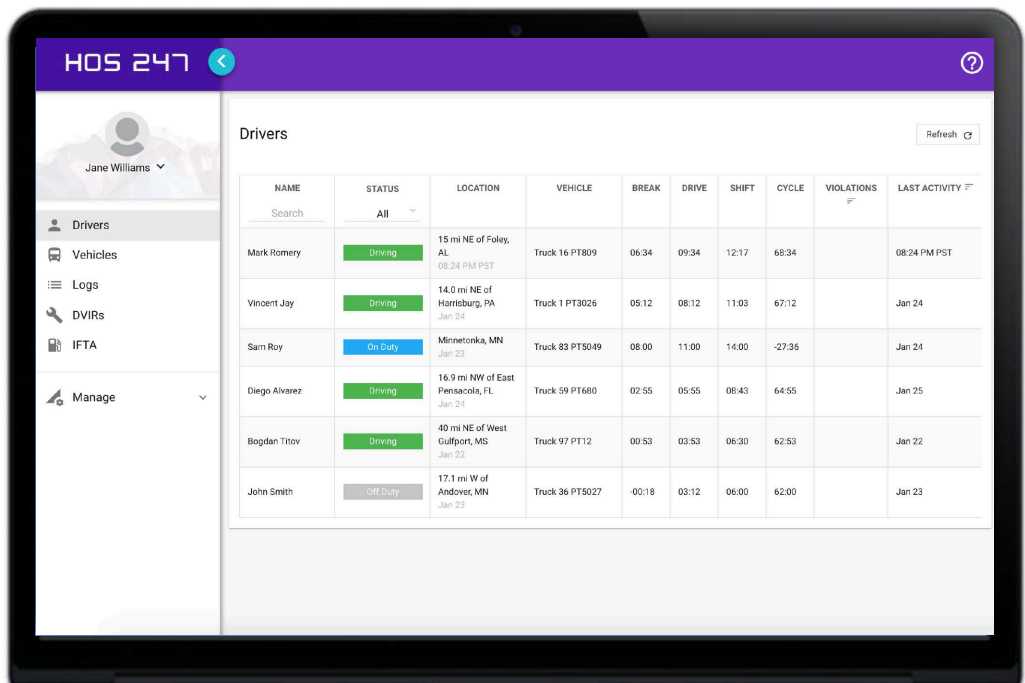
Tap "Start Inspection"
for DOT Mode



View HOS Rules
and Exceptions

Compliance Dashboard

Make sure your drivers stay compliant and productive



Current Status

View current statuses and locations of your drivers. Click on a driver to see details.



Real-Time Hours

View real-time hours to avoid violations and regulatory fines



Violations

Monitor violations in real time and mitigate compliance risks

Driver Details

Everything about the driver in one place

Vincent Jay
Edit Refresh

555-345-2345
 john@hos247.com
 USA Property 70 hour / 8 day
 Last Update: JAN 21 4:00 PM EST

Hours of Service

STATUS	DATE	VEHICLE	LOCATION	BREAK	DRIVE	SHIFT	CYCLE
DRIVING	JAN 11 4:00 PM EST	Truck 29 - PT2929	14.0 mi NE of Harrisburg, PA	05:12	08:12	11:03	67:12
> Recap > Map							

Logs

Recent Log

DATE	HOURS DROVE	DISTANCE	VIOLATIONS & ERRORS
11 Jan 2017	2 hours	378 mi	

Last 14 Days More

DATE	HOURS DROVE	DISTANCE	VIOLATIONS & ERRORS
10 Jan 2017	10	321 mi	
11 Jan 2017	10	427 mi	
12 Jan 2017	10	358 mi	
10 Jan 2017	10	310 mi	
11 Jan 2017	10	321 mi	
12 Jan 2017	10	382 mi	
10 Jan 2017	10	361 mi	
11 Jan 2017	10	420 mi	



Hours of Service

View current status and real-time hours. Available and reset hours are calculated automatically.



Driver Logs

View current log graph grid and last 14 logs. Click on a log to see log details. Click "More" to view historical logs.



Violations & Errors

Monitor violations and errors in real time. View past violations and mitigate compliance risks.



Details

View driver contact information, current or last known vehicle and location.

Logs

Make sure your drivers stay compliant and productive

HOS 247

Jane Williams

- Drivers
- Vehicles
- Logs
- DVIRs
- IFTA
- Manage

Logs

Filter by Date Refresh

DATE	DRIVER	HOURS DROVE	MILES DROVE	VIOLATIONS & ERRORS
Jan 24	Mark Romery	11	293	
Jan 24	Vincent Jay	10	374	
Jan 24	Sam Roy	11	356	
Jan 24	Diego Alvarez	10	341	
Jan 24	Bogdan Titov	11	328	
Jan 24	John Smith	11	281	
Jan 23	Mark Romery	11	299	
Jan 23	Vincent Jay	11	410	
Jan 23	Sam Roy	11	335	
Jan 23	Diego Alvarez	10	357	
Jan 23	Bogdan Titov	11	372	
Jan 23	John Smith	11	434	
Jan 22	Mark Romery	10	308	
Jan 22	Vincent Jay	11	359	
Jan 22	Sam Roy	11	374	



View logs

View all current and past logs up to six months



Filter

Filter by date or driver



Violations

Monitor violations in real time

Log Details

Log form and events

Tue Jan 24, 2017 01/24/2017

John Smith USA Property 70 hour / 8 day Certified No Violations

Log Form

General			
Driver	Vincent Jay	Co-Driver	
Driver ID	35742	Co-Driver ID	
Driver Licence	DO00034685038246741	ELD S/N	JDI5774564
Driver Licence State	CA	ELD Manufacturer	HOS 247
Exempt Driver Status	No	Data Diagnostic Indicators	No
Unidentified Driving Records	No	ELD Malfunction Indicators	No

Vehicles & Trailers				
VEHICLE	VIN	START END ODOMETER	DISTANCE	START END ENGINE HOURS
PT9393	ADR34543F36DA6	39564 - 39844	420 mi	758.2 - 765.7
TRAILERS	SHIPPING DOCS	CARRIER	MAIN OFFICE	HOME TERMINAL
2320	123456	USA Trucking	10921 Excelsior Blvd, Hopkins MN, 55343	10921 Excelsior Blvd, Hopkins MN, 55343

Log

Log Events

TIME (PST)	EVENT/ STATUS	LOCATION	ODOMETER	ENGINE HOURS	ORIGIN	NOTES
0:00	SB	49 mi NNE Fallon, NV	39564	758.2	Driver	
1:00	Login	49 mi NNE Fallon, NV	39564	758.2	Driver	
10:00	ODND	49 mi NNE Fallon, NV	39564	758.2	Driver	
10:50	ODND	49 mi NNE Fallon, NV	39564	758.2	Auto	
12:00	Driving	2 mi E Fernley, NV	39624	759.3	Auto	
13:00	Intl Location	3.5 mi SW Davis, CA	39684	760.3	Auto	



Log Form

Form and manner errors are displayed automatically.



Vehicles & Trailers

View vehicle & trailer information. Check shipping documents numbers.



Log Events

Check log events. Click on event to suggest an edit. Click "+" to suggest to add an event.

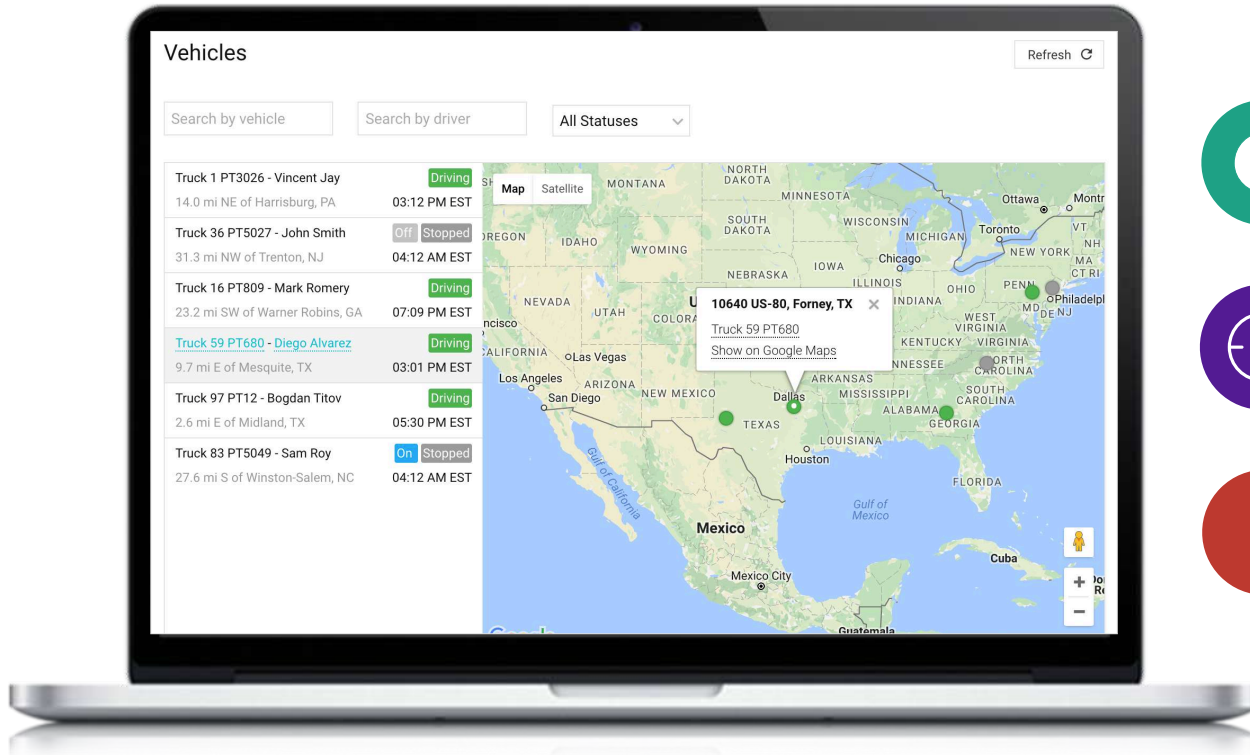


Log Date

Click on a calendar in the top right corner to change a date or click "<->" to switch between logs.

Fleet Tracking

Accurate and reliable fleet tracking system



Fleet Tracking

Track your vehicles and view current locations in real time



Drivers Monitoring

Instantly know who is behind the wheel and monitor drivers' statuses

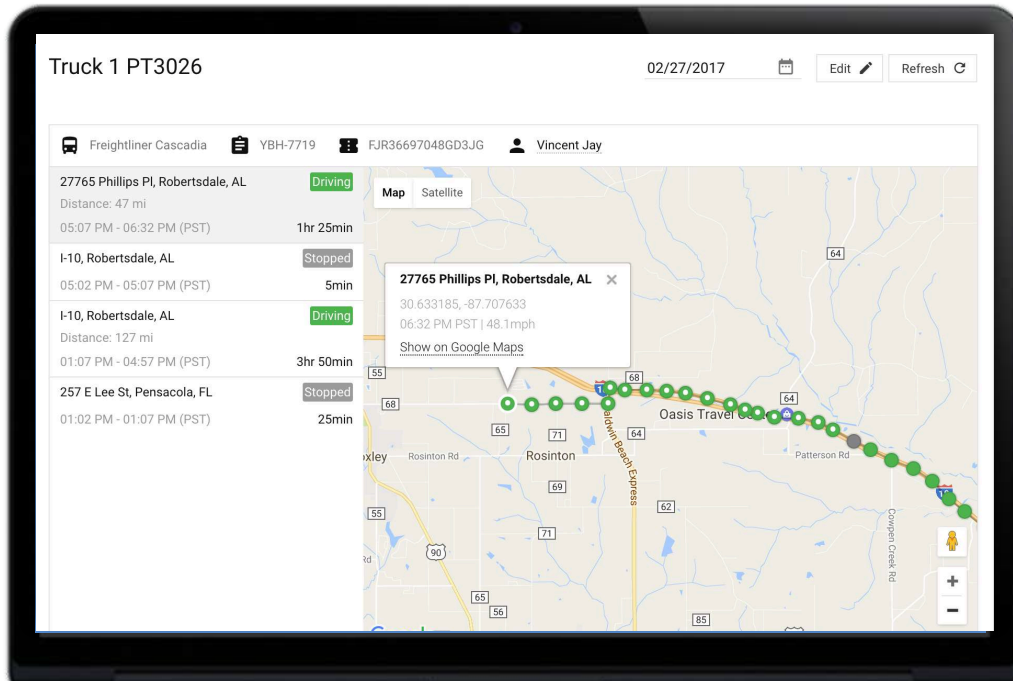


Issue Notifications

Receive real-time alerts for vehicle defects, diagnostic issues, nearing violations and occurred violations

Location History

Make sure your drivers stay compliant and productive



Breadcrumb Trails

View vehicle location history with breadcrumb trails



Route Points

Driving time and distance between stops is calculated automatically



Street View

View location surroundings via google maps

IFTA Reporting

The easiest, most complete IFTA miles reporting

IFTA Report

Start Time [] End Time [] Refresh []

STATE	MILES
Truck PT8872	
CA	564.4
MA	276.4
VA	980.7
AK	267.4
AL	732.9
CT	171.1
KS	711.9
MD	145.5
NJ	253.4
MN	99.2
Truck PT8496	
Truck PT5680	
Totals	
STATE	MILES
CA	564.4
MA	276.4
VA	1030.2
AK	710.5
AL	732.9
CT	171.1
KS	1487.3
MD	145.5
NJ	253.4
MN	658.5
OR	350.4



Vehicle Miles

Vehicle state miles are calculated automatically



Total Miles

Total miles per state are calculated automatically



Calendar

Run miles report for a specific time frame, quarter or entire year

More Features

More Features & Integrations Coming Soon



Messaging

Communicate with drivers
in real-time



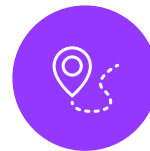
Documents

Electronically scan documents
and stay organized



Diagnostics

Receive fault code alerts
in real time



Trailer Tracking

Track your trailers current
location and location history



Loads

Find, schedule and optimize
loads via integrated partners



Dispatch

Dispatch your fleet via
integrated partners



Routing

Optimize your routes via
integrated partners



Parking

Find available truck parking and
more via integrated partners

ELD Connectivity

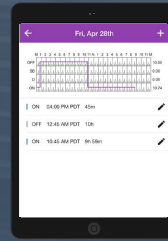
Optional ELD data plans & connected devices

ELD Data Plan



HOS 247 utilizes growing T-Mobile 3G/4G/LTE network to provide reliable and affordable ELD connectivity.

ELD Tablet



ELD tablets support 3G/4G/LTE connectivity and work great outside of major cities unlike most consumer tablets with 4G/LTE only connectivity.

ELD Navigation



HOS247 Logbook App, TomTom trucking navigation and routing. All in one industrial grade device connected to 3G/4G/LTE network.



!A1 ELD

Best ELD System

!A1 ELD solution ensures FMCSA compliance and delivers superior safety and productivity for any fleet. !A1 ELD logbook app and electronic logging devices are perfect choice for small to large fleets and owner-operators.